

CULTURE

New Exhibitions, June: London

Stylus rounds up a selection of the best exhibitions in London in June. Be inspired by colour, form and composition from new and emerging artists as well as iconic veterans.

EXHIBITION LISTINGS

New Exhibitions, June: London

Stylus rounds up a selection of the best exhibitions in London in June. Be inspired by colour, form and composition from new and emerging artists as well as iconic veterans.

“I Have an Excellent Idea... Let’s Change the Subject” – an exhibition of new works by Wolfe von Lenkiewicz

Taking its name from a line uttered by the Mad Hatter in Lewis Carroll's *Alice in Wonderland*, this exhibition features the work of painter Wolfe von Lenkiewicz. The large-scale pieces toe the line between fictional and factual worlds, where Leonardo da Vinci and Disneyland exist, with Alice herself playing a part on numerous occasions. For a gothic yet colourful representation of Pablo Picasso-esque styling, visit von Lenkiewicz's mad world.

All Visual Arts
2 Omega Place, London, N1 9DR
Until July 14
allvisualarts.org



At Home in Japan

In the West, minimal styling, neat layouts and wide empty spaces typify Japanese interior design and architecture. But an exhibition at London's Geffrye Museum thwarts this perception by revealing that ordinary life in Japan is not just bonsai trees and whitewash. Based on original research by Oxford University anthropologist Dr Inge Daniels, *At Home in Japan* takes visitors inside the contemporary urban home to unearth domestic living in Japan today.

Geffrye Museum
136 Kingsland Road, London, E2 8EA
until August 29
geffrye-museum.org.uk



George Shaw: The Sly and Unseen Day

One for colour enthusiasts. This solo exhibition by British artist George Shaw brings together paintings made over the past 15 years, charting the urban landscape of his childhood home on the Tile Hill Estate in Coventry, UK. Meticulously painted houses, pubs, underpasses and parks capture an otherwise mundane and unimportant time and, with a lavish colour palette, transforms them into exciting landscapes.

South London Gallery
65 Peckham Road, London, SE5 8UH
until July 3
southlondongallery.org



Ai Weiwei

While political controversy still surrounds Chinese artist Ai Weiwei (most noted for his Sunflower Seeds installation at the Tate Modern), a new exhibition at the Lisson Gallery surveys his key works from the past six years. Highlights include Colored Vases – a selection of beautifully painted ceramic pots, and Moon Chest – a complex series of wooden chests that change the view of the visitor when viewed through holes in the centre.

Lisson Gallery
52-54 Bell Street, London, NW1 5DA
Until July 16
lissongallery.com



Tracy Emin: Love is What You Want

Loved and loathed in equal measure, we can't help but feel drawn to Tracey Emin's vulnerability. As one of the UK's most celebrated and controversial female artists, a major new survey at the Hayward Gallery covers every stage of her career. The exhibition features painting, drawing, photography, textiles, video and sculpture in works that are at once tough, romantic, desperate, angry and funny. Seldom-seen early works and recent large-scale installations are shown together with a new series of outdoor sculptures created especially for the space.

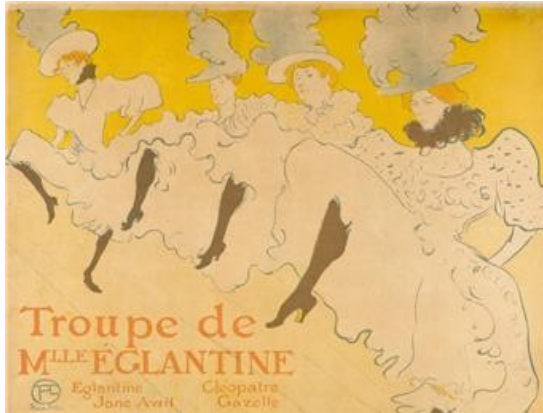
Hayward Gallery
Southbank Centre, Belvedere Road, London, SE1 8XT
Until August 29
southbankcentre.co.uk



Toulouse-Lautrec and Jane Avril: Beyond the Moulin Rouge

Dancer Jane Avril was a star of the Moulin Rouge in the 1890s and was known for her exotic style and persona – forever captured in exquisite posters designed by artist Henri de Toulouse-Lautrec. Bringing together Lautrec's most famous paintings, posters and prints, this exhibition captures their creative partnership and friendship.

The Courtauld Gallery
Somerset House, London, WC2R 0RN
June 16 to September 18
courtauld.ac.uk



Eyewitness: Hungarian Photography in the 20th Century

Internationally renowned photographers such as Brassai, Robert Capa and André Kertész made their names in Germany, France and the US. But their Hungarian origins, along with those of others displayed in Eyewitness, can account for landmark examples of photojournalism, art and fashion photography. Around 200 photographs dating from 1914-1989 explore stylistic developments and chart key events in Hungarian photography.

Royal Academy
Burlington House, London, W1J 0BD
June 30 – October 2
royalacademy.org.uk



Pablo Bronstein: Sketches for Regency Living

Stylus insider Mary Katrantzou has designed the costumes for the dance performance, so this free exhibition is definitely one not to miss. Multi-media artist Pablo Bronstein presents *Sketches for Regency Living*, where, for the first time, an individual artist is invited to work across the entire institute, introducing major architectural interventions, as well as choreographing art and ballet performances. Bronstein explores London's Regency history in the form of performances, drawings, installations and sculptures which cover the entrance hall, bar, theatre, galleries, concourse and all other rooms of the ICA.

Institute of Contemporary Art (ICA)
12 Carlton House Terrace, London, SW1Y 5AH
June 9 to September 25
ica.org.uk



Bouke de Vries: Fire, Works

Creating new sculptures from the broken remains of ceramic vessels and figurines, artist and ceramicist Bouke de Vries examines the contradictions that surround the perception of perfection. Created in extreme fire conditions, de Vries' sculptures are distorted, burnt and smudged, but in their state of obsolescence they are beautiful – like ghostly versions of their former selves. Great for product inspiration, de Vries shows how there exists a fantastical attraction to imperfection.

Vegas Gallery
274 Poyser Street, London E2 9RF
Until July 2
vegsgallery.co.uk



Junya Ishigami: Architecture as Air

Japanese architect Junya Ishigami's first installation in the UK is a structure comprising a single curved line of delicate four-metre columns that run the length of the Barbican gallery's Curve space, which appear to be suspended by just the air and atmosphere.

Barbican Art gallery
Silk Street, London, EC2Y 8DS
June 28 – October 16
barbican.org.uk



Watch Me Move: The Animation Show

Stylus is particularly excited about the Barbican's upcoming exhibition tracing the history of animation over the past 150 years. The Animation Show brings together contemporary artists, cut-out, collage, puppet, clay and stop-motion animators, auteur filmmakers and exponents of experimental film alongside commercial studios such as **Walt Disney, Hanna-Barbera, Aardman, and Pixar**. This exhibition explores the relationship between animation and film and offers insight into animation as a cultural and socio-political phenomenon. It looks fun, too.

Barbican Art Gallery
Silk Street, London, EC2Y 8DS
June 15 – September 11
barbican.org.uk



Ai Wei Wei: Circle of Animals/Zodiac Heads

The beautiful historic courtyard of London's Somerset House has never played host to contemporary art sculpture, but from May 12, it will showcase controversial Chinese artist Ai Wei Wei's Circle of Animals. The large bronze sculpture – comprising 12 heads representing the animals of the Chinese zodiac – is part of an international tour, which started in New York on May 2. Visit the New York version at the Pulitzer Fountain, Grand Army Plaza at Central Park until July 15.

Somerset House
The Strand, London, WC2R 1LA
Until June 26
www.somerset-house.org.uk



The Shape of Things to Come: New Sculpture

Capturing the dynamism and diversity of sculpture, *The Shape of Things to Come* offers a look at some of the most exciting examples of sculpture in the past few years. Pieces by artists such as John Baldessari, Berlinde Bruyckere and Kris Martin are assembled, sewn, layered, meshed and formed out of a variety of materials such as clay, fabric, horse hide and found objects.

Saatchi Gallery
Duke of York HQ, London, SW3 4SQ
Until October 16
saatchi-gallery.co.uk



From The Tiger Who Came to Tea to Mog and Pink Rabbit

Children's story writer and illustrator Judith Kerr's charming body of work is displayed at the V&A Museum of Childhood, giving children (and adults) a chance to become acquainted with a series of her most loved stories and drawings. These include *The Tiger Who Came to Tea*, and her autobiographical novel, *When Hitler Stole Pink Rabbit* – a story of her family's flight from Nazi-occupied Germany in 1933.

V&A Museum of Childhood
Cambridge Heath Road, London, E2 9PA
Until September 4
www.vam.ac.uk/moc



Practice to Deceive: Smoke & Mirrors in Fashion, Fine Art and Film

In this new exhibition by creative collective website SHOWstudio's shop, smoke and mirrors act not only as a metaphor for contemporary styling in fashion and film, but also as a literal checklist of themes found in standout examples of fashion photography. Icons such as Nick Knight and Craig McDean are featured among others.

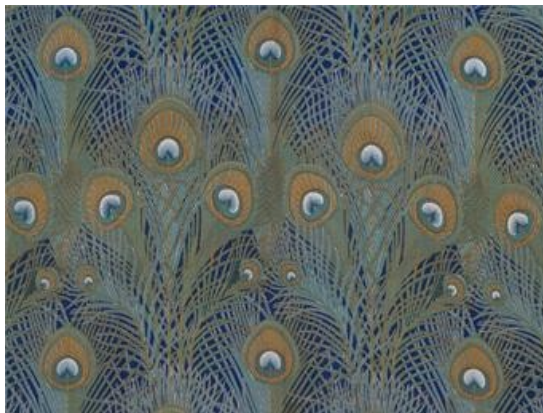
SHOWstudio Shop
1-9 Bruton Place, London, W1J 6LT
until July 16
shop.showstudio.com



The Cult of Beauty: The Aesthetic Movement 1860-1900

A comprehensive view of Aestheticism, whose champions included Gabriel Rossetti, William Morris, Christopher Dresser and Liberty's department store. This is set to be a highly inspirational exhibition.

Victoria & Albert Museum (V&A)
Cromwell Road, London, SW7 2RL
until July 17
vam.ac.uk



James Stirling: *Notes from the Archive*

A retrospective of architect James Stirling's work, including a number of completed and uncompleted projects as well as drawings, photographs and furniture.

Tate Britain
Millbank, London, SW1 4RG
until August 21
tate.org.uk/britain



Absurd Impositions: Drawings by Rebecca Fortnum

A selection of drawings by Rebecca Fortnum at the Museum of Childhood explores the ways in which portraits evoke the imaginative life of children.

V&A Museum of Childhood
until October 4
vam.ac.uk/moc



Hand-Drawn London

Hand-Drawn London looks at mapping London – not factually or geographically, but based on the individual experiences, perceptions and imaginations of Londoners. The maps have all been created by members of the public, and are personal projections of their relationships with the capital's landscape. This exhibition is great for learning more about the city, but also viewing it in a new light.

Museum of London
150 London Wall, London, EC2Y 5HN
until September 11
museumoflondon.org.uk



Figures in Fiction: Contemporary South African Photography

Responding to South Africa's constant struggle with issues of identity across race, gender, class and politics, this exhibition showcases those photographers tackling the subject. A vibrant photographic culture emerged in post-apartheid South Africa, and it's great to see how it translates into contemporary photography.

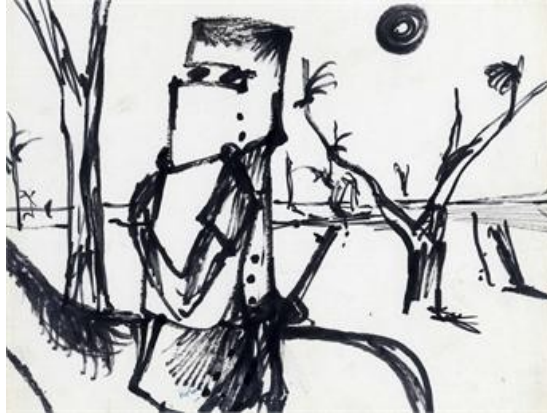
The Victoria and Albert Museum (V&A)
Cromwell Road, London, E2 9PA
until July 17
vam.ac.uk



Australian Season

A series of free exhibitions and events running through October will introduce visitors to new aspects of Australian life. In collaboration with the British Museum, London's Kew Gardens will play host to an Australian habitat while an exhibition at the museum highlights Australian artists from the 1940s to the present day, and showcases indigenous Australian objects in its Baskets and Belongings display.

British Museum
Great Russell Street, London, WC1B 3DG
until October 16
britishmuseum.org



Yohji Yamamoto

A retrospective of pioneering Japanese fashion designer Yohji Yamamoto featuring an installation and smaller displays throughout the V&A.

Victoria & Albert Museum (V&A)
Cromwell Road, London, SW7 2RL
until July 10
vam.ac.uk



Wim Crowwel: A Graphic Odyssey

Featuring the progressive typographic designs of graphic designer Wim Crowwel and highlighting his painstaking design process, this will be the designer's first UK retrospective.

Design Museum
Shad Thames, London, SE1 2YD
until July 3
designmuseum.org



A Flash of Light: The Dance Photography of Chris Nash

Dance photographer Chris Nash is inspired by movement, light, colour and composition. The exhibition showcases over 60 of his exquisite prints. Thirty years of contemporary British dance are documented as well as Nash's collaboration with names such as the Rambert Dance Company.

Victoria and Albert Museum (V&A)
Cromwell Road, London SW7 2RL
until August 29
vam.ac.uk



Brit Insurance Designs of the Year 2011

The prestigious Brit Insurance Designs Awards celebrate the most innovative and pioneering international designs of the year.

Design Museum
Shad Thames, London, SE1 2YD
until August 7
designmuseum.org



Watercolour

A stunning display of watercolour paintings from the Middle Ages to the present day.

Tate Britain
Millbank, London, SW1P 4RG
until August 21
tate.org.uk



Sitting the Light Fantastic: an installation by Kei Ito

Creating the centrepiece of the Geffrye Museum's newly refurbished front garden, Kei Ito has designed a lighting installation of ethereal chairs and lamps. Each chair consists of a steel frame, overlaid with a fibre optic textile, providing inspiration for display and materials.

The Geffrye Museum
136 Kingsland Road, London, E2 8EA
until Autumn 2012
geffrye-museum.org.uk



Last Chance...

Watteau: The Drawings

A retrospective of the French artist Jean-Antoine Watteau's life work displays exquisite examples of period drawings. The vast collection of more than 80 pieces is organised chronologically, examining the development of his drawing methods – from unfinished sketches to elaborate and detailed portraits. Stylus loves the way Watteau achieved depth and substance in his drawings with as little as three coloured chalks in a mixture of subtle and harsh strokes. His drawings also act as an exciting reminder of the beauty and potential of hand-illustrated work.

Royal Academy of Art
Burlington House, Piccadilly, London, W1J 0BD
until June 5

royalacademy.org.uk

